

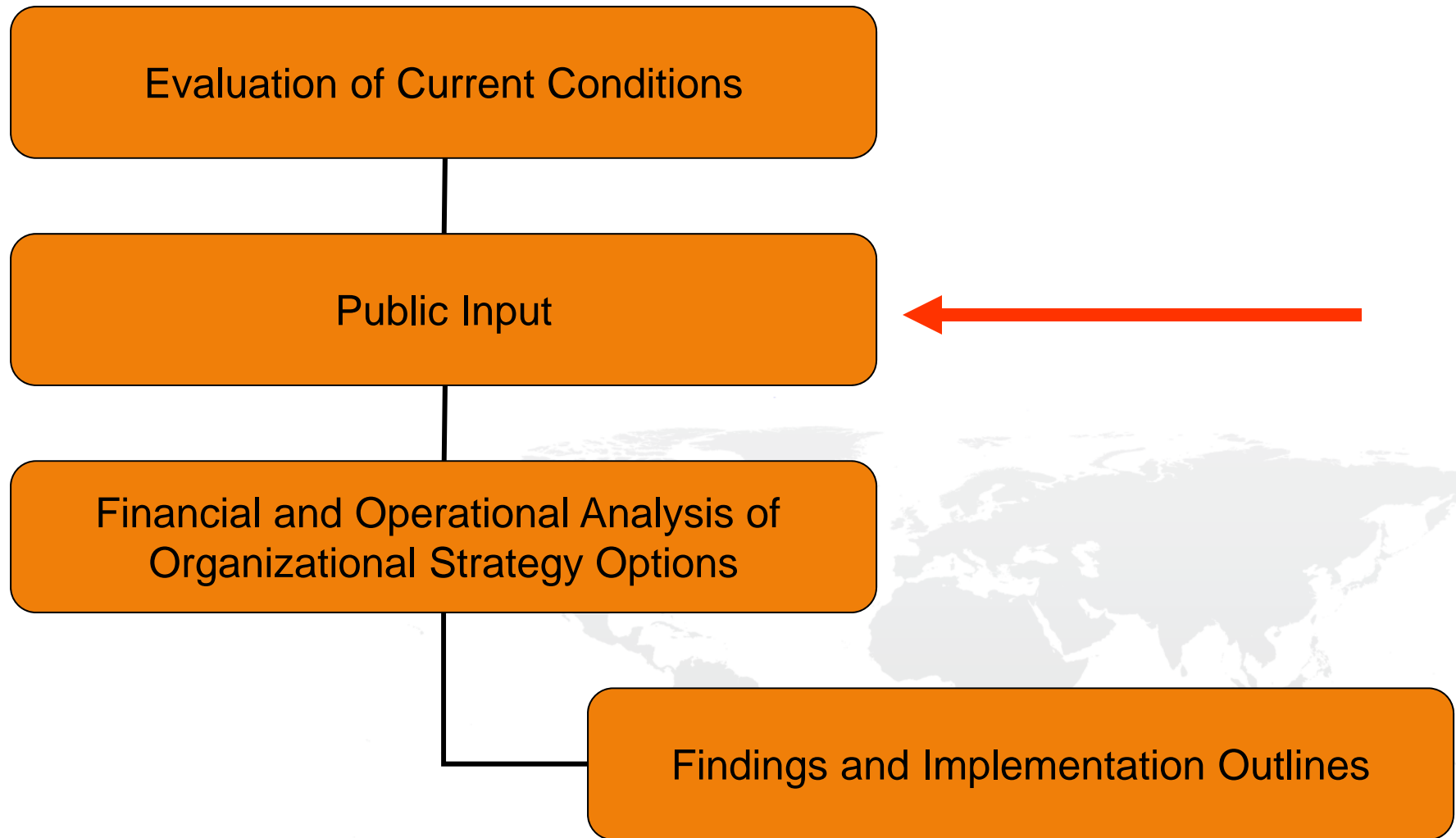


**Emergency Services Consulting**  
*International*

# **Cooperative Fire Service Delivery Feasibility Analysis**

*Shaker Heights and  
University Heights*

# Feasibility Study Process



# Evaluation of Current Conditions

- Purpose
  - Provide an external view
  - Comparisons and benchmarks
  - Intended as positive experience for FD
  - Becomes the foundation by which options are analyzed and compared

# Evaluation of Current Conditions

- Methodology
  - Analysis of statistics
  - Review of documents
  - Interviews with key staff
  - Interviews with government officials
  - Direct observation

# Evaluation of Current Conditions

- Components of Evaluation
  - Organization Overview
  - Management Systems
  - Capital Assets
  - Staffing and Personnel Management
  - Support Services
    - Training
    - Fire Prevention Programs
    - Communications
  - Deployment and Performance

# Resource Comparison

## Administrative and Support Personnel

Position	SHFD	UHFD	Total
Fire Chief	1	1	2
Assistant Chief	1	0	1
Accounting Clerk	1	0	1
Fire Inspector	1	0	1
Supt. Of Equipment	0.5	0	0.5
<b>Total</b>	<b>4.5</b>	<b>1</b>	<b>5.5</b>

## Physical Resources

	Stations	Engines	Aerials
SHFD	2	3	1
UHFD	1	1	1
<b>Total</b>	<b>3</b>	<b>4</b>	<b>2</b>

## Operations Personnel

Position	SHFD	UHFD	Total
Battalion Chief	3	0	3
Captain	0	4	4
Lieutenant	12	3	15
Firefighter/Paramedic	31	0	31
Firefighter	8	21	29
<b>Total</b>	<b>54</b>	<b>28</b>	<b>82</b>

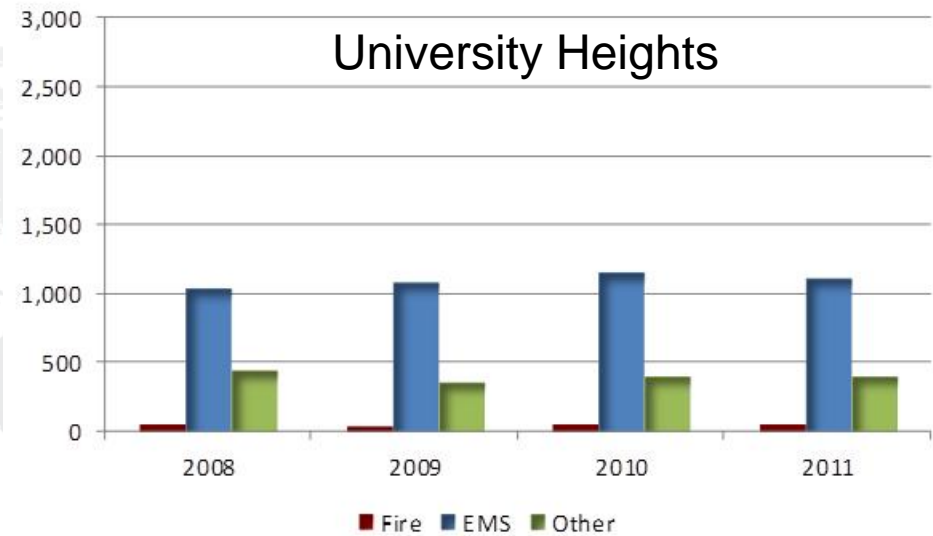
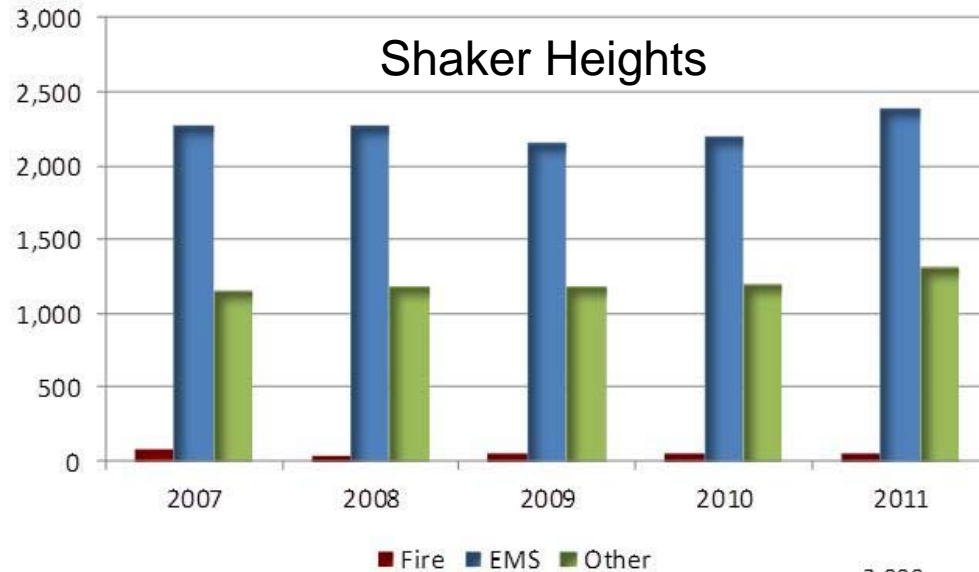
## Average Structure Fire Staffing

Department	Average Structure Fire Staffing
SHFD	11.7
UHFD	5.6

# Current Deployment and Performance

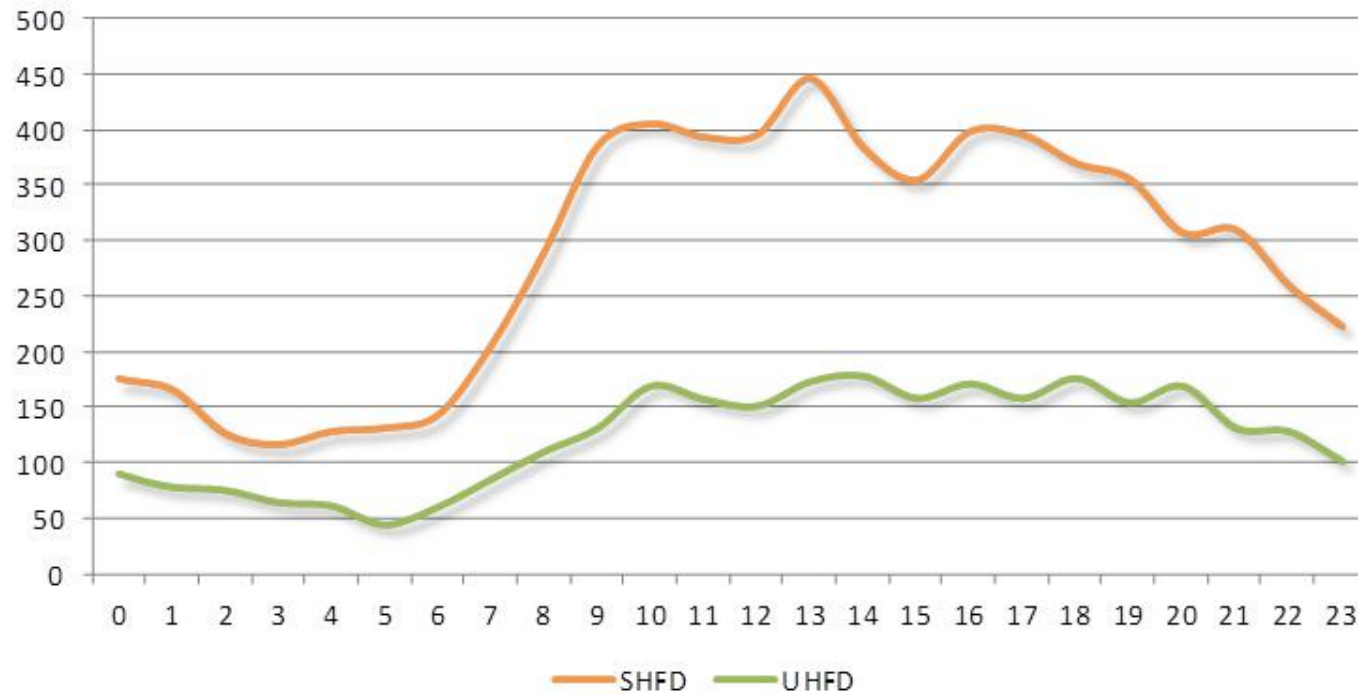
- Demand Study
- Distribution Study
- Performance Analysis
- Concentration Study

# Demand Study

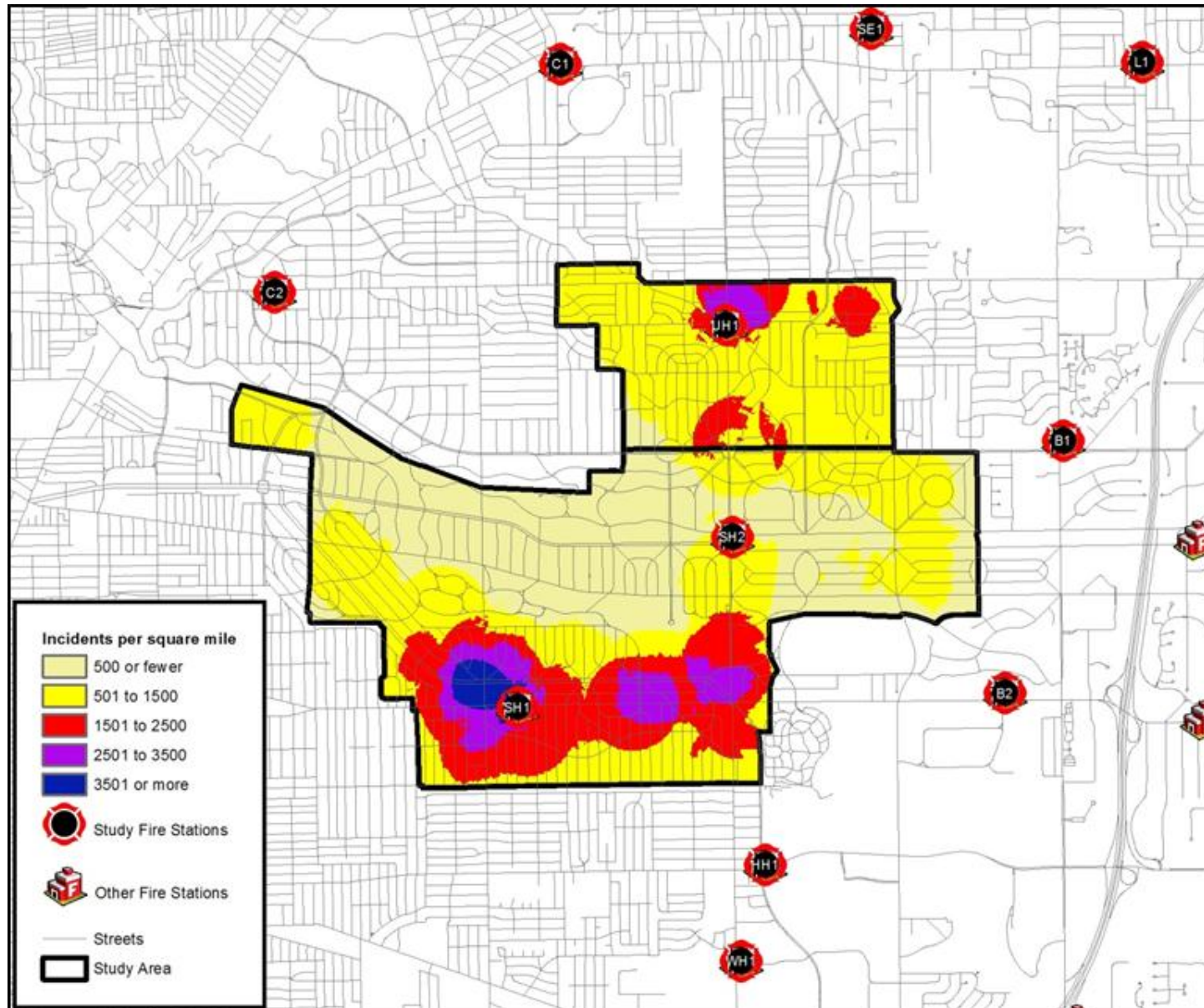




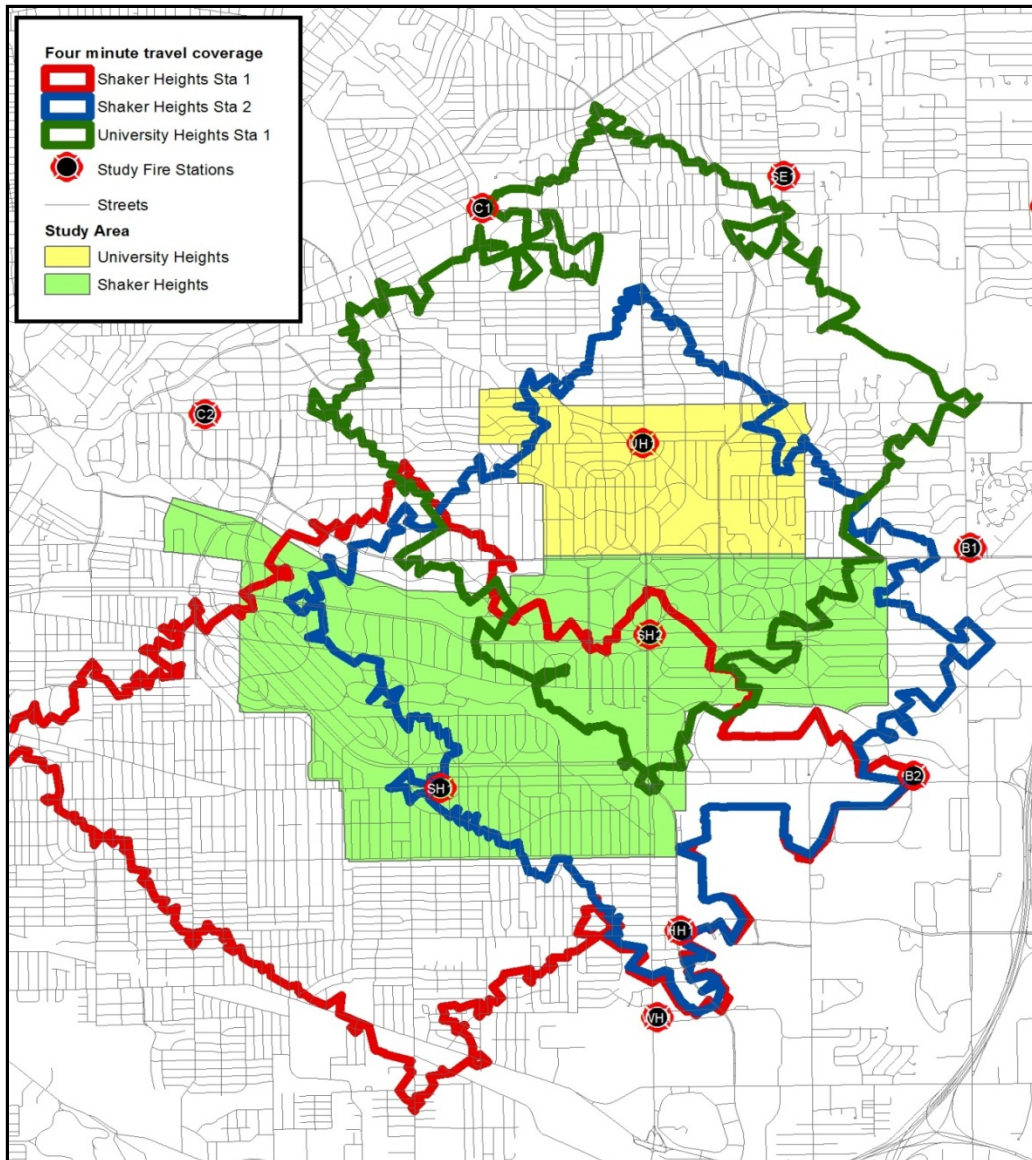
# Demand Study



# Demand Study



# Distribution Study



4:00 of  
modeled  
travel time

# Distribution Study

- 100 percent of all incidents occurring with the study area are within four-minutes travel of a fire station
- UHFD overlaps 31.3 percent of the SHFD service area within the city of Shaker Heights
- SHFD Station 1 overlaps 68.4 percent of SHFD Station 2's area
- SHFD Station 2 overlaps 88.2 percent of UHFD area within the city of University Heights

# Performance Analysis

## 1<sup>st</sup> Unit Arrival Times

	SHFD	UHFD
2010	04:36	04:33
2011	05:00	04:21

*\* Data is from National Fire Incident Reporting System (NFIRS)*

